



## SERVICE PROVISION

### Barton Green Houses

Clifton, Nottingham, NG11 8SR (and other NG11 Postcodes)

Nottingham City Council

Applies to: All properties  
No. of properties: 81

Other Information:

#### Breakdown of schemes:

Camelia Avenue	6
Eucalyptus Avenue houses (1-5)	5
Hartness Road houses	13
Jasmine Close	8
Juniper Close	33
Pieris Drive	16
<b>Total:</b>	<b>81</b>

#### Following Schemes are on own budget:

Flats at Lilac Court	30
Flats at Eucalyptus Avenue (6-22)	16
Hartness Road (120-126, 128-134, 136-142, 144-150, 152-158)	20
	<b>66</b>

## **Barton Green Houses**

Clifton, Nottingham, NG11 8SR (and other NG11 Postcodes)

### **1 Grounds Maintenance**

- 2 Grass cutting and maintenance of shrubbed areas to communal areas as detailed on site plan.
- 3 Grass clippings to be collected and removed from site as standard (exception may occur for verges/grass bank areas).
- 4 Lawn edges with paths/fences to be tidied and maintained.
- 5 Note: Large items of rubbish or quantities of animal excrement will be reported back to office. Gardeners are not expected to deal with bulky waste or waste that poses a biohazard.
- 6 Remove all self-set saplings from site wherever they occur.
- 7 Leaves and general litter to be removed from site and not allowed to gather on any part of the site that is marked for grounds maintenance. Where leaf blowers are used, all leaves and other light litter should be removed from site.
- 8 Footpaths, bin stores and drying areas should be kept clear of foliage, weeds and debris - this includes cutting back of any vegetation growing in from over boundaries. Moss will be treated and removed.
- 9 Car parks, hardstanding/hard surface areas and respective edges will be kept clear of all debris, weeds and moss.
- 10 Hedges and shrubs will be pruned as required to maintain a tidy, neat, shaped and well pruned appearance. Height, width and shape as appropriate to the location and hedge/shrub type.
- 11 Hedges/Shrubs forming a boundary should generally be no more than 1.8 metres high and should not obstruct access or egress. They should be maintained at a consistent level as far as possible.
- 12 Hedges/Shrubs adjacent to properties should be maintained at least 10cm clear of windows or vents and with clear access to electric/gas meters maintained.
- 13 Hedges, shrubs and lower branches of trees (up to 2m from the ground) should not be allowed to overgrow boundaries into neighbouring properties or public areas and cause nuisance. Nor should they be allowed to grow into any structures that may result in damage (ie. fences, sheds, buildings) or obstruction (ie. street lights, paths, bin stores, garages, driveways etc).
- 14 Growth of hedges and shrubs should not be permitted to cause an obstruction. Likewise, excessive basal growth on trees will be removed and any low hanging branches that come within 2 metres of the ground will also be removed.
- 15 Hedges and shrubs beds will be kept weed free and also litter free. Leaf litter will not be allowed to accumulate in hedge and shrub bottoms.

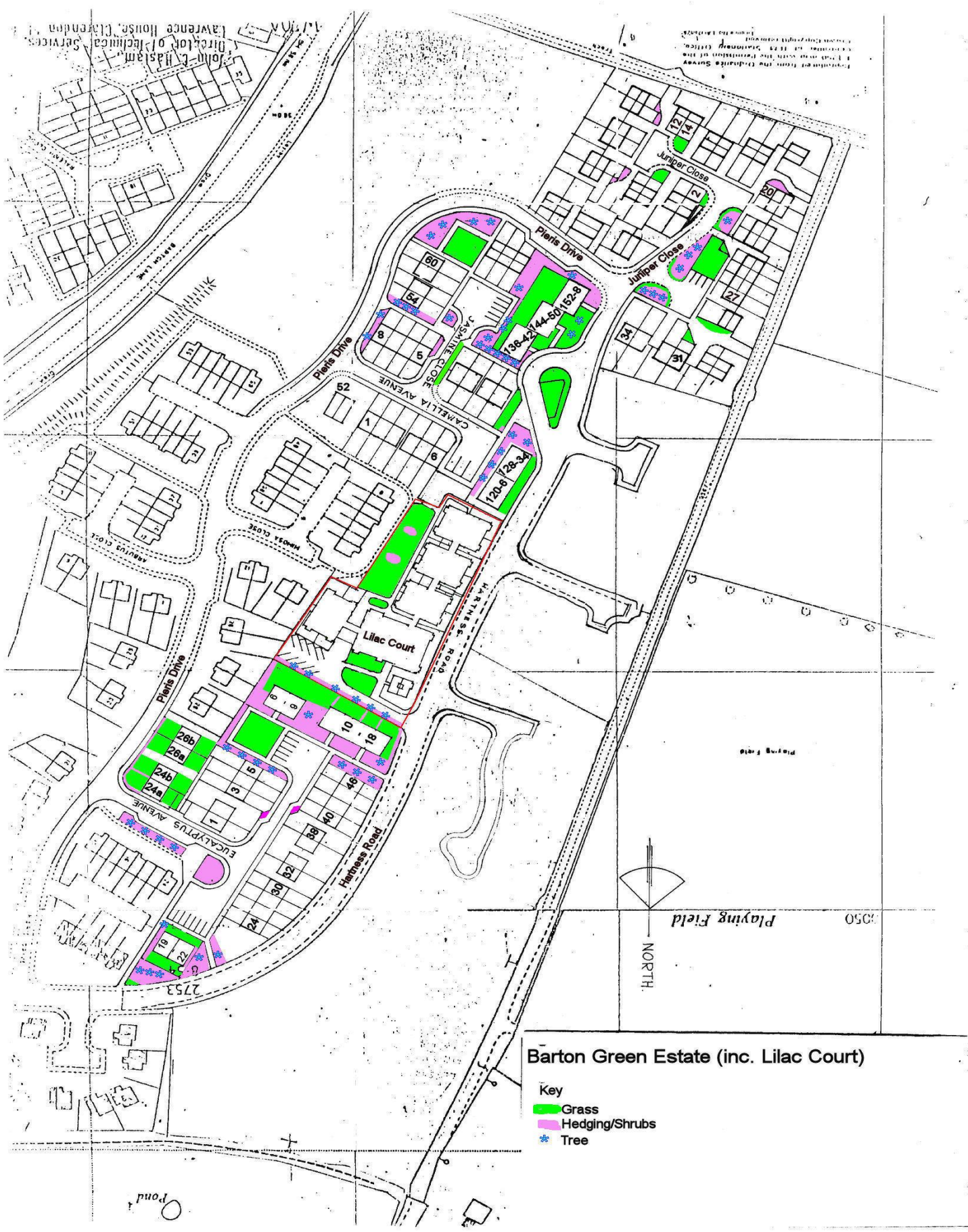
- 16 Tree surgery is not automatically included in the service charge. Any works will be considered on an individual basis in accordance with NCHA's Tree Policy taking into account the health of the tree, health and safety, environmental concerns, aesthetics, planning restrictions, etc. Any works will be done in consultation with tenants as often incurs additional costs.
- 17 Very minor works to trees will be expected as part of the main contract ie. Removal of branches upto 2m height that may cause obstruction, encroach on boundaries, pose a head injury hazard. Minor works also include the routine removal of basal growth where it occurs.
- 18 Contractors should recommend where replanting of shrubs and trees is required. Any agreed works will be consulted on with customers and will be ordered and managed outside of the standard grounds maintenance contract.
- 19 Where invasive weeds are found on site, to advise the NCHA and advise an appropriate course of action. Invasive weeds are considered to be those covered by various articles of UK legislation and also perennial plants that proliferate and dominate their environment causing problems to neighbours and structures ie. Russian Vine, Ivy, Bindweed etc.
- 20 Where Ivy is on site and established but not causing immediate problems, NCHA considers it to be managed as part of the contract to keep it from blocking windows, meter cupboards, doors, vents etc. All Ivy should be maintained at a height below 1.5m to ensure control and not requiring working at height.

Where it is possible to remove easily, remove it.

Where Ivy is becoming a problem ie. out of hand and encroaching on the fixtures and fittings of a building ie. upstairs windows, vents, guttering or affecting outbuildings, trees, fences etc and requires removing, please advise NCHA.

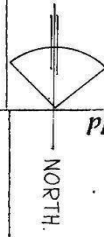
- 29 Keep all shrub beds and hedge bottoms free of weeds.
- 30 Gardeners to take several photos of main areas and at each visit and provide these to NCHA.
- 39 As required at the request of NCHA, meet with NCHA staff and Community Voice representatives to discuss performance and grounds maintenance.
- 43 **Seasonal Works - Grounds Maintenance**
- 44 Spring: Lawn maintenance will resume, slowly at first and building up to twice monthly from April. Some works to shrubs and hedges to maintain access but areas may be missed where birds are nesting (legal requirement). Hard surface swept on each visit and treatment for weeds will begin mid Spring.
- 45 Summer: Lawn maintenance is twice monthly. Works to shrubs and hedges will be carried out but again, areas may be missed where there are nesting birds. Hard surface areas swept on each visit and treatment for weeds on monthly basis. Aggressive species of plants - invasive weeds - will be treated during this growing season.
- 46 Autumn: Lawn maintenance will reduce in line with vigour of lawn growth and stop in November. Shrubs, hedges and trees will be cut back in readiness for next year. Hard surfaced areas swept on each visit, light litter picked on each visit but weed treatment will stop after September.

- 47 Winter: Maintain general tidiness of site including litter picking for light litter. Any major works to trees will take place at this time, as well as replacement of dead/damaged shrubs and turf.
- 48 General: Please contact the office or [Communalservices@ncha.org.uk](mailto:Communalservices@ncha.org.uk) directly if you are concerned about a tree or invasive species of plant. Please take pictures from several angles and attach them to your email.
- 49 **Scheme Manager**
- 54 Fly Tipping/removal of large items will incur an additional charge.
- 56 Scheme Managers will report any faults/Health & Safety issues they notice, however NCHA encourage tenants to report directly to NCHA Property Services any faults within their own property or communal area.
- 58 The Scheme Manager Hours are charged over a 52 week period. Due to annual leave sickness cover, training attendance and meetings you may not receive 52 visits.
- 60 It is the tenant's responsibility to arrange for the disposal of large items, you can do this by contacting the Local Authority.
- 61 Carry out an Estate Inspection within the scheme boundary to check for any Health & Safety, maintenance or grounds maintenance concerns. The Scheme Manager will report any concerns to the relevant department.
- 62 Carry out a litter pick and any remove debris (leaves etc).
- 63 Ensure that parking bays and access paths are clear of debris.
- 64 Remove and or report any fly tipping within the estate boundary.
- 89 **Futher & Additional Information**
- 90 Please treat contractors with due courtesy.
- 91 If you have any questions about service provision, please contact this office on 0800 0138 555 or [Communalservices@ncha.org.uk](mailto:Communalservices@ncha.org.uk) and we will be happy to help.



**Barton Green Estate (inc. Lilac Court)**

- Key
- Grass
  - Hedging/Shrubs
  - ★ Tree



Playing Field

0 50

Pond

John L. Haslam  
Director of Technical Services  
Lawrence House, Clarendon

Copyright reserved by the  
Council of the City of London  
1998