



# Holloway, Repton

Three-bedroom  
semi-detached house  
available to buy through  
shared ownership

“

A home of your  
own at a price you  
can afford

”

 ncha

# Specifications

## Kitchen

- Fitted modern kitchen
- Integrated oven and hob
- Stainless steel extractor hood
- Vinyl flooring

## Bathroom

- White bath suite with chrome fittings
- Tiling to ceiling around the bath
- Shower over bath
- Glass shower screen
- Vinyl flooring

## Heating

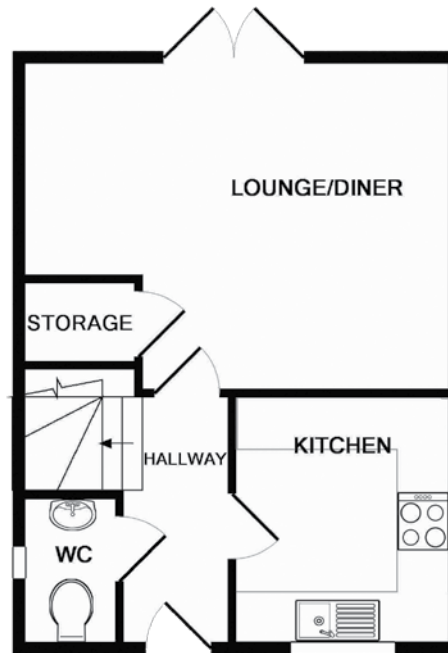
- Gas fired central heating with combi boiler
- Thermostatic radiator valves
- Double glazed windows

## External

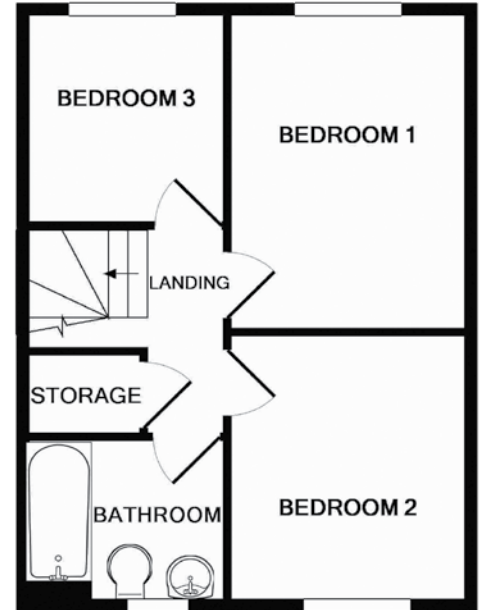
- Allocated off-street parking
- Enclosed rear garden

## Decoration

- Magnolia emulsion walls and white ceilings
- White gloss painted woodwork



Ground floor



First floor

# Energy assessment

- Energy rating – B

# Key dimensions

| Room           | Dimensions  |
|----------------|-------------|
| Lounge         | 5m x 3.9m   |
| Kitchen/dining | 2.9m x 2.6m |
| Bedroom 1      | 2.6m x 3.7m |
| Bedroom 2      | 3.1m x 2.6m |
| Bedroom 3      | 2.5m x 2.3m |

Any measurements quoted are approximate and must be checked on site and against the layout which may vary due to unforeseen circumstances. Floor plans may be mirror handed. These details have been produced for illustrative purposes only and does not form any part of a contract or constitute an offer. Actual specification may vary from that shown in floor plan.

## How to find us

This home is located on Holloway in Repton, Derbyshire. If using a SatNav, the postcode is DE65 6RH.

## Buying more shares

This shared ownership home is sold on a 99 year protected area shared ownership lease. You can purchase more shares to 100%. If you own over 80% and decide to sell, we will buy your home back from you.



0345 650 1204  
nchasales@ncha.org.uk  
www.ncha.org.uk

@NCHASalesTeam  
@NCHASales